

## Disassembly

1. Remove the splash guard by unscrewing it from the number plate holder and the rear fork (Abb.1).
2. Disconnect the lighting system (27) and remove the original licence plate holder by unscrewing it (31, Abb. 2).



Abb.1

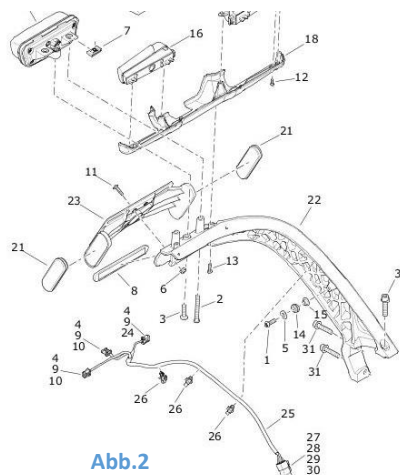


Abb.2

## Mounting the Cult-Werk number plate holder

1. fasten the bracket (Pos.1, Abb.3) to the original fastening points with 3 screws supplied.
2. Now fix the plate (Pos.2, Abb.3) with the screw M12x35 - use washer!

3 x Linsenkopfschraube  $\frac{5}{16}$ " - 18 UNC x 1"

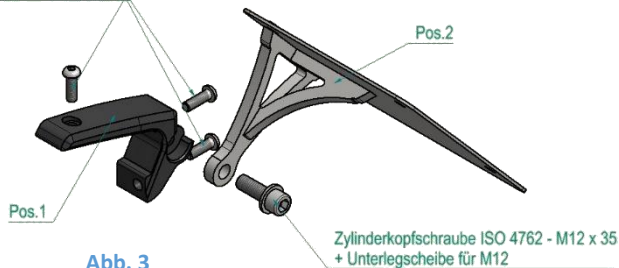


Abb. 3



Abb. 4: installed licence plate holder

We recommend the use of a medium-strength screw lock (e.g. LOCTITE 243, blue).

## Wiring

1. Cut off the original plug.
2. pull the cable of the number plate light forward and connect it properly

For the installation of the Cult-Werk number plate holder, the original holder including the lighting system must be uninstalled. A new lighting system that meets the legal requirements must be installed (e.g. Cult-Werk rear mudguard HD-BRO060).