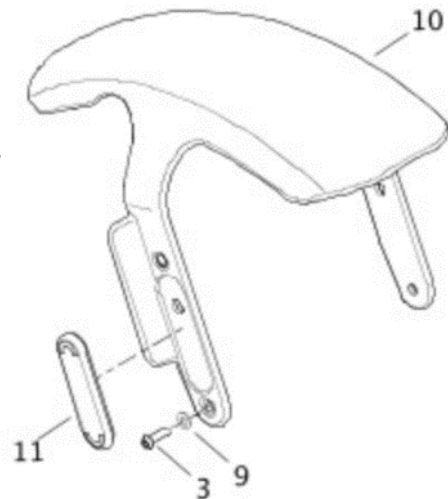


Dismantle original front fender

1. loosen the screws (3) and washers (9) of the original fender.
2. dismantle the fender (10)

Note: Keep the original screws and washers.

These will still be needed for the subsequent assembly.



Fitting the "Roadster" front fender

1. mount the front fender Roadster with the original screws and washers.
Tightening torque: 10 to 15Nm

We recommend using a medium-strength screw lock (e.g. LOCTITE 243, blue) for all screws.



Abb.: 1 – Frontfender montiert



Abb.: 2 - Frontfender Roadster