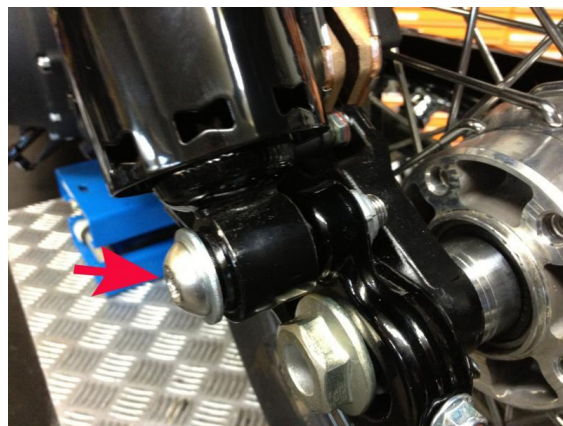


! Note !

For the following work, it is necessary to lift the motorbike to relieve the shock absorber. When doing this, ensure that the motorbike is standing securely and secure it against rolling away or tipping over.

Dismantling original parts

1. lift the motorbike and take the load off the shock absorbers.
2. loosen the lower fastening screw of the left shock absorber - this is replaced by the screw supplied by Cult-Werk.



Mounting licence plate holder

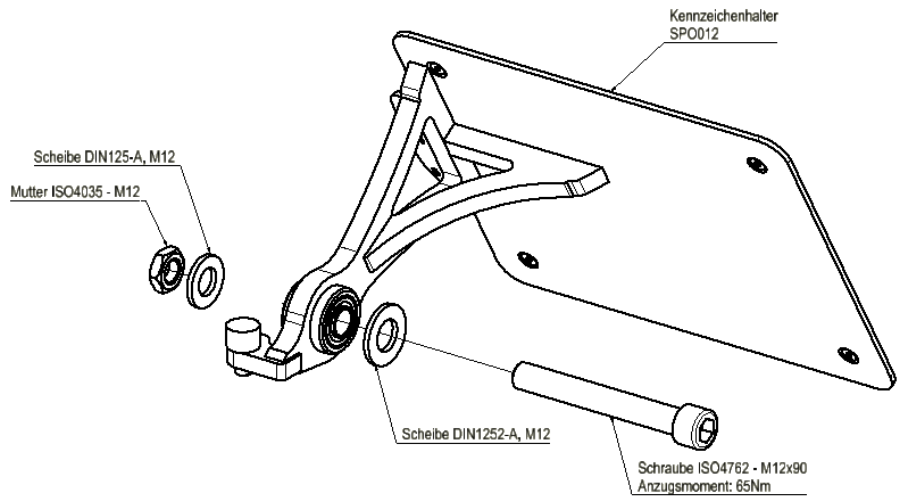
1. Mount the licence plate holder as follows:
 - 1) Swing arm
 - 2) Shock absorber
 - 3) Licence plate holder
 - 4) Screw

Important: The licence plate holder is mounted outside the shock absorber.

Tightening torque: 60-65 Nm

2. Check the length of the screw supplied. It must be screwed into the nut at least 6 turns. If the screw is longer, it is ok -> minimum distance to the pulley: 5mm.
If necessary, the screw can be shortened

We recommend using a medium-strength screw lock (e.g. LOCTITE 243, blue) for the screw.



Wiring

1. extend the cable of the original licence plate light and route it downwards to the licence plate holder.
Tip: the cable can be routed behind the brake line. 2.
2. connect the cables together. Note: Positive and negative poles do not matter, as this is LED technology. It is not possible to connect them incorrectly