

Dismantling original parts

1. loosen the screws (1, Abb.1) of the original side covers and remove them.
2. loosen the fastening screws of the rear fender (6,Abb.1) - now the entire original rear can be removed.
3. After you have removed the seat, the rest of the rear can be removed after loosening the screws (5).

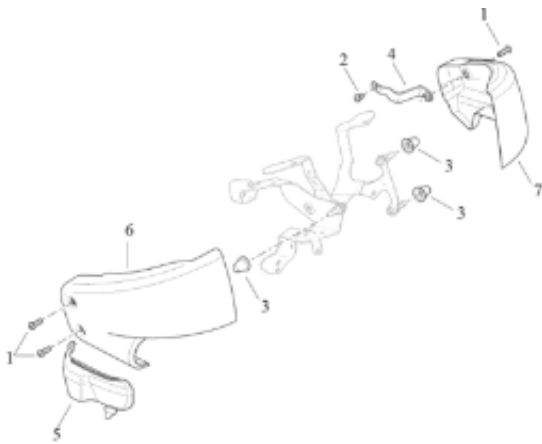


Abb. 1

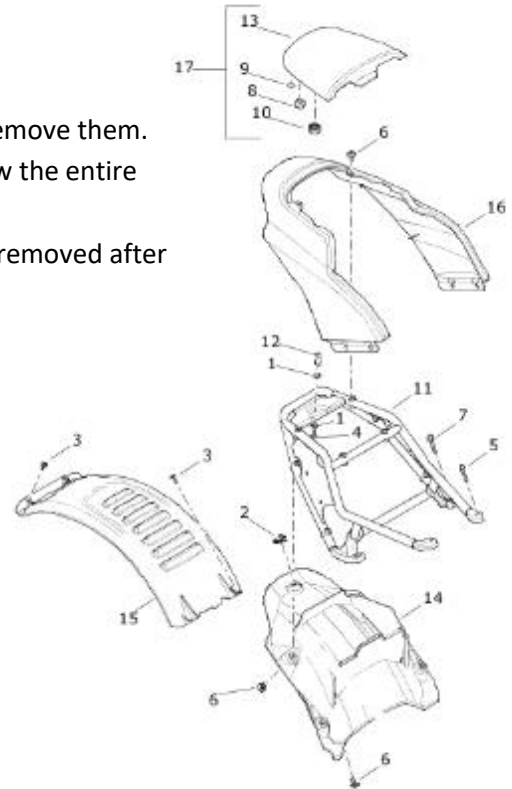


Abb. 2

Before mounting the rear conversion, the indicators and the brake/tail light must be glued into the ABS rear fender using a suitable mounting adhesive.

Lighting used:

2x LED indicator: E1 – EC-MI007LED

1x brake/tail light: E4 – EC-TL008LED

Rear assembly

1. Fix the metal inner fender to the frame with the countersunk screws (4x DIN7991) (Abb.3).
2. Replace the original tank mounting with the supplied threaded bolt (M6x80) and the round nuts - also remove the plastic caps of the tank (Abb. 4).

1



Abb. 3



Abb. 4

- place the ABS tail over the inner fender.
During the following assembly, be careful not to tighten the screws completely - the parts must remain movable for alignment!
- fix it from the rear with the supplied screws (Abb.5, 6x M6x30 + washer).
- then fix the rear end to the front fastening points (Abb.6, 2x M6x20 + washer).
(Abb.6, 2x M6x20 + washer).



Abb. 5



Abb. 6

Intermediate step for 2-seater rear:

Place the seat pad in the recess provided for it in the rear and fix it in place with the screws. (Abb.7, 2x M8x20 + 2x M8x30)



Abb. 7



- Align the rear end and tighten the fixing screws.
- thread the connections of the lighting forward into the seat area.
There, the wiring must be carried out properly.
- insert the seat from above and fix it from behind with the screws. (2x M6x30)



When mounting the rear, ensure sufficient clearance to all moving parts.

We recommend using a medium-strength screw lock (e.g. Loctite 243, blue) for the screws.

! Note !

To mount the rear it is necessary to remove the original rear incl. licence plate holder and light system. A side licence plate holder incl. licence plate light (e.g. HD-BRO059) must be fitted. The lighting system installed in the Cult-Werk rear end complies with the legal requirements.

In addition, the side covers must be removed. Here we recommend the installation of our side covers (e.g. HD-BRO050 incl. retaining bracket HD-UNI013).